

Mapping, Town Highway Maps, and Route Logs

Vermont Agency of Transportation

Mapping Section

February 2018

Annual Mileage Certificates

Annual processing of the Mileage Certificates for 270 municipalities, including towns, cities, gores, grant, and incorporated villages.

Changes include additions, alterations, reclassifications and discontinuances of highways and trails.

An annual mileage summary is produced and feeds the Certified Public Highway Mileage Report.

District 3
CERTIFICATE OF HIGHWAY MILEAGE
 YEAR ENDING FEBRUARY 10, 2015

Fill out form, make and file copy with the Town Clerk, and mail ORIGINAL, before February 20, 2015 to:
 Vermont Agency of Transportation, Division of Policy, Planning and Intermodal Development,
 One National Life Drive, Montpelier, VT 05633.

We, the members of the legislative body of CLARENDON in RUTLAND County
 on an oath state that the mileage of highways, according to Vermont Statutes Annotated, Title 19, Section 305,
 added 1985, is as follows:

PART I - CHANGES TOTALS - Please fill in and calculate totals.

Town Highways	Previous Mileage	Added Mileage	Subtracted Mileage	Total	Scenic Highways
Class 1	0.000				0.000
Class 2	23.370	0.84	1.02	23.19	0.000
Class 3	25.06	0.82		25.88	0.000
State Highway	14.441	1.028	0.837	14.630	0.000
Total	62.871			63.700	0.000
* Class 1 Lane	0.000				
* Class 4	2.73		0.82	1.91	0.000
* Legal Trail	0.00				
* Unidentified Corridor	0.00				

* Mileage for Class 1 Lane, Class 4, Legal Trail, and Unidentified Corridor classifications are NOT included in total.

PART II - INFORMATION AND DESCRIPTION OF CHANGES SHOWN ABOVE. Adjustments by

- NEW HIGHWAYS:** Please attach Selectmen's "Certificate of Completion and Opening". S. Moulton 3/23/2015
- DISCONTINUED:** Please attach SIGNED copy of proceedings (minutes of meeting).
- RECLASSIFIED/REMEASURED:** Please attach SIGNED copy of proceedings (minutes of meeting).
 0.82 miles of the Quarterline Road [T. H. 49] reclassified from class 4 to class 3 - The Quarterline Road is now a Class 3 Road from the Town Boundary with Rutland Town to the intersection of Union Rd and the
- SCENIC HIGHWAYS:** Please attach a copy of order designating/discontinuing Scenic Highways. Quarterline Rd.

IF THERE ARE NO CHANGES IN MILEAGE: Check box and sign below.

PART III - SIGNATURES - PLEASE SIGN.

Selectmen/ Aldermen/ Trustees Signatures: *[Signatures]*

T/COV Clerk Signature: *Moira Menard* Date Filed: *4/27/15*

Please sign ORIGINAL and return it for Transportation signature.

AGENCY OF TRANSPORTATION APPROVAL: Signed copy will be returned to T/COV Clerk.

APPROVED: _____ DATE: _____
 Representative, Agency of Transportation

Certified Public Highway Mileage

Annually, Mapping compiles the Certified Public Highway Mileage and submits the report to the Federal Highway Administration (FHWA) on or before June 1st.

This mileage table is a key input to the mileage used by the Highway Performance Monitoring System (HPMS) used by the VTrans Asset Management & Performance Bureau.

VERMONT AGENCY OF TRANSPORTATION
DIVISION OF POLICY, PLANNING AND INTERMODAL DEVELOPMENT

STATE OF VERMONT - HIGHWAY MILEAGE - FOR YEAR OF 2016

Summarized by TOWN and COUNTY
 Figures reported as of February 10, 2016

County	Class 1 Lane Highway	Class 1	Class 2	Class 3	Class 4	Legal Trail	Unidentified Corridor	State Highway	Total Class 1,2,3 and St Hwy	Scenic Highway
ADDISON	0.510	7.964	243.840	582.73	89.94	19.10	0.00	188.830	1,023.364	14.418
BENNINGTON	0.597	12.921	149.400	454.15	65.38	37.67	0.00	169.475	785.946	0.000
CALEDONIA	0.046	8.269	195.005	701.13	151.57	36.06	0.00	214.830	1,119.234	0.000
CHITTENDEN	12.568	16.409	287.510	715.10	36.58	10.60	0.00	174.514	1,193.533	3.050
ESSEX	0.102	1.709	60.455	172.70	71.45	20.70	0.00	121.302	356.166	0.000
FRANKLIN	0.249	12.197	221.050	583.41	83.94	12.48	0.00	211.385	1,028.042	0.000
GRAND ISLE	0.000	0.000	44.960	83.22	3.17	0.32	0.00	45.100	173.280	0.000
LAMOILLE	0.405	4.371	95.150	380.05	88.00	18.97	0.00	121.639	601.210	22.025

MILEAGE PROOF

PUBLIC ROAD MILEAGE: Vermont, Calendar 2015
 AS OF FEBRUARY 10, 2016

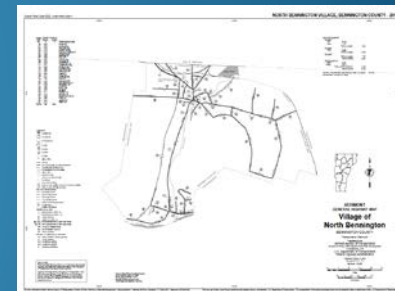
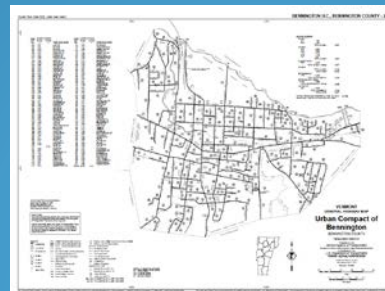
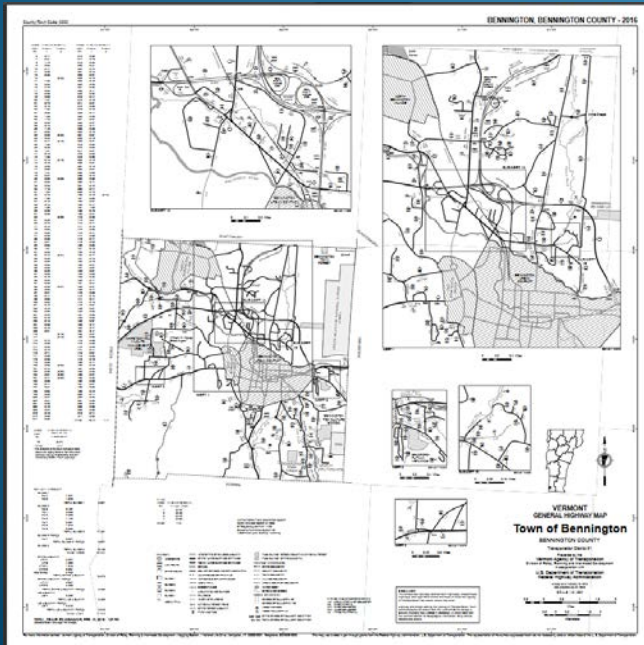
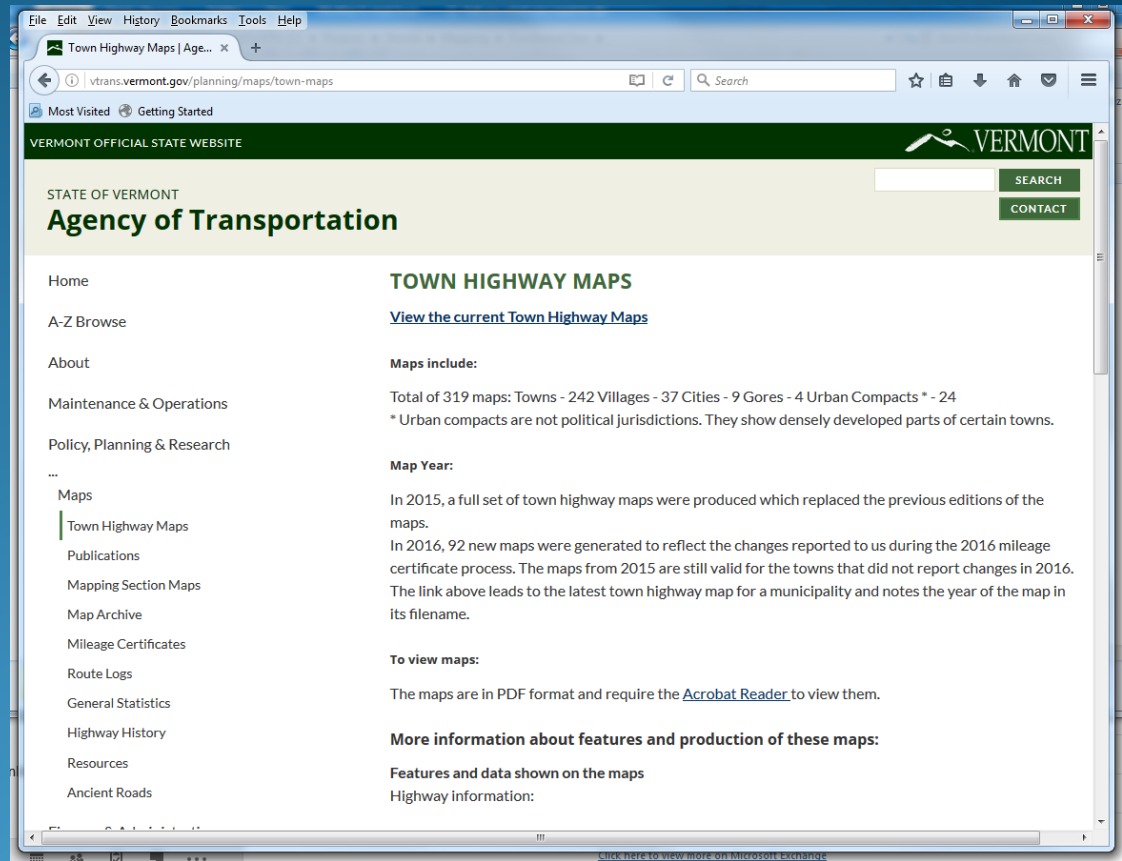
26-May-16

State Certified Mileage		FEDERAL-AID SYSTEM	Functional Class		Proposed Miles	
			FC Code	Miles		
CLASS 1 TOWN HWY.	139 1/2		Interstate	1	320	
CLASS 2 TOWN HWY.	2,785		PA-Other Freeways/Express.	2	18	
CLASS 3 TOWN HWY.	8,539		PA-Other	3	425	13
STATE HWY.	2,709		Minor Arterial	4	879	
SUB-TOTAL	<u>14,172</u>		Major Collectors	5	2,227	
Army	12		Minor Collectors	6	18	
Natl Forest Service	78		TOTAL F.A. SYSTEM		3,885	13
Fish & Wildlife Service	41					
Navy	0.04		LESS F.A. SYSTEM		3,885	
Army Corps of Engineers	32					
Other US Government Highway**	0.21		TOTAL OFF SYSTEM		<u>10,367</u>	
SUB-TOTAL	<u>164</u>					
TOTAL	14,336					
LESS RAMPS	<u>76</u>					
LESS OTHER FACILITIES*	<u>2</u>					
TOTAL PUBLIC ROAD MILES	14,252					

1/2 Does not include 23,969 class 1 town highway lane mileage.
 *Added "LESS OTHER FACILITIES" because Approach, Spurs, Jughandles included in mileage totals and these need to be backed out and non-inventory direction
 ** 0.211 miles of Border Patrol/Customs in Richford not accounted for in VTrans mileage and not appearing in FEDMILE report.

Town Highway Maps

The Mapping Section produces 319 individual Town Highway Maps of each municipality in Vermont.



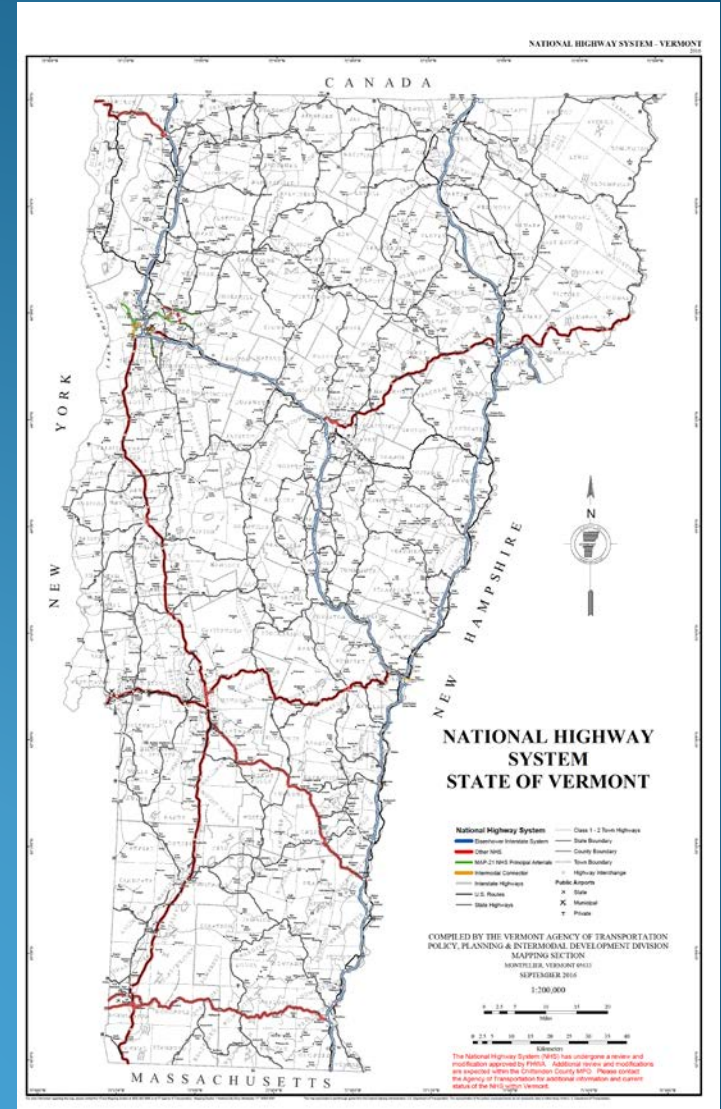
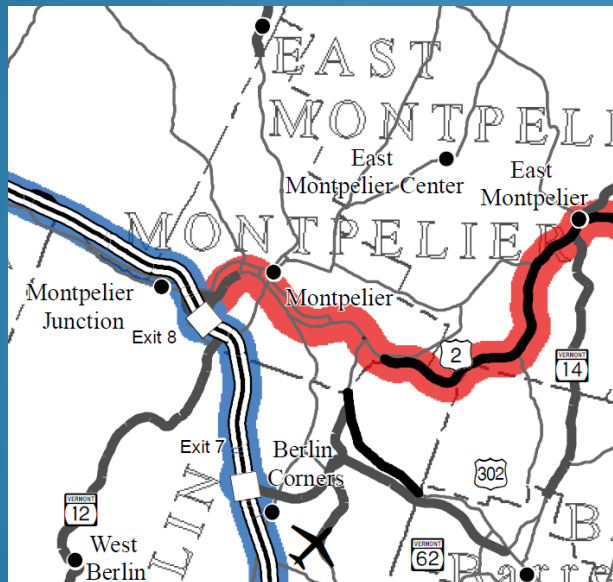
<http://vtransmaps.vermont.gov/mapsftp/current.asp>

National Highway System and Functional Classification of Highways

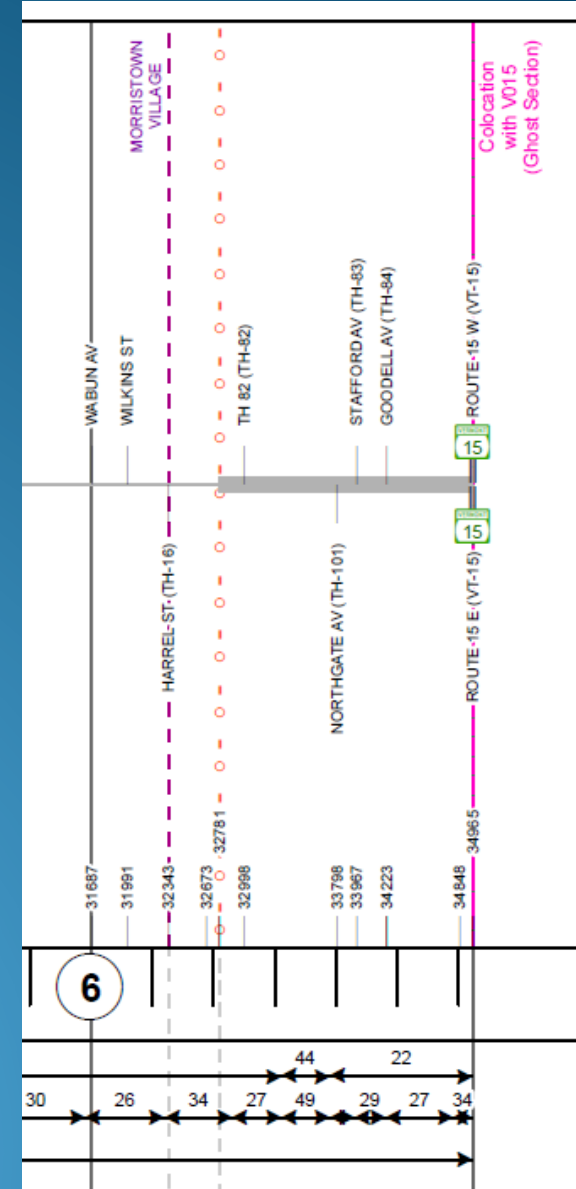
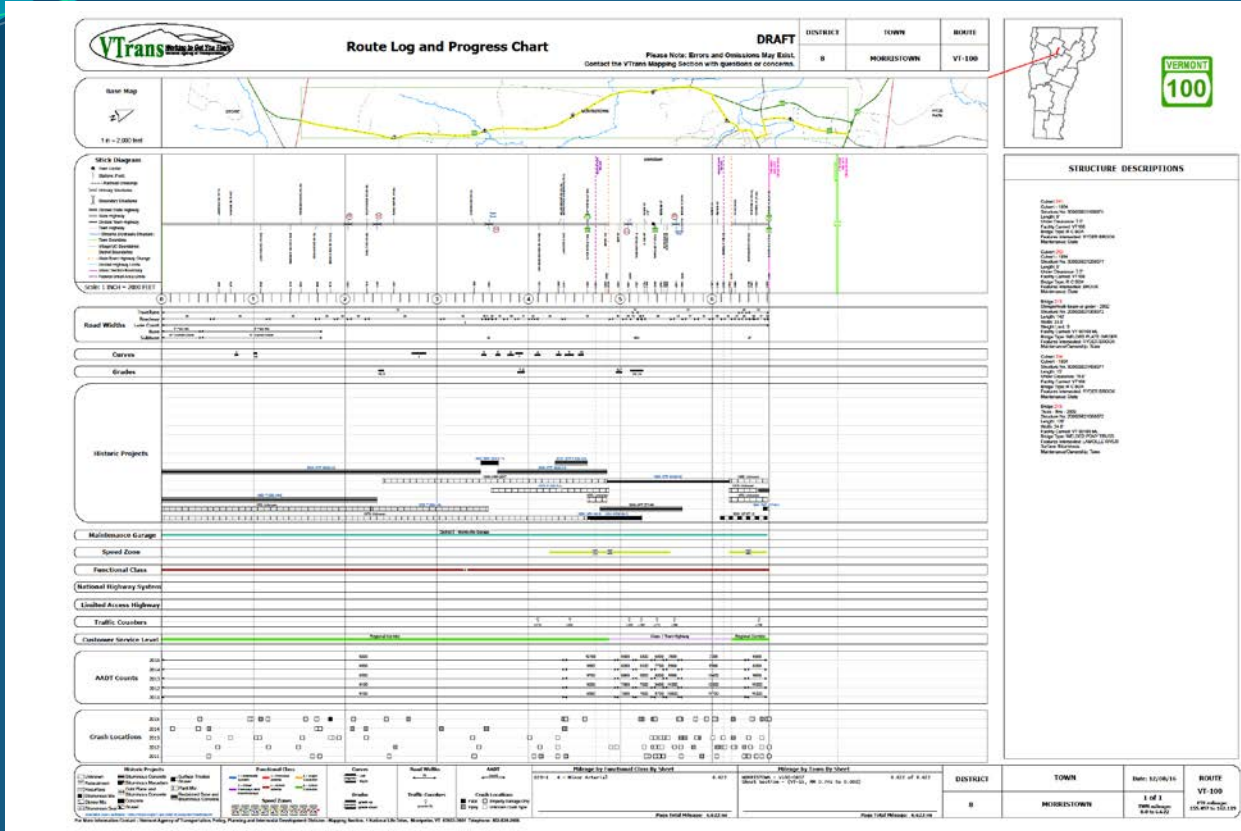
In 2016, the Mapping Section took over the responsibility of mapping the National Highway System (NHS) and the Functional Classification of the highways. This includes coordination with Regional Planning Commissions and FHWA.

National Highway System

- Eisenhower Interstate System
- Other NHS
- MAP-21 NHS Principal Arterials
- Intermodal Connector
- Interstate Highways
- U.S. Routes
- State Highways

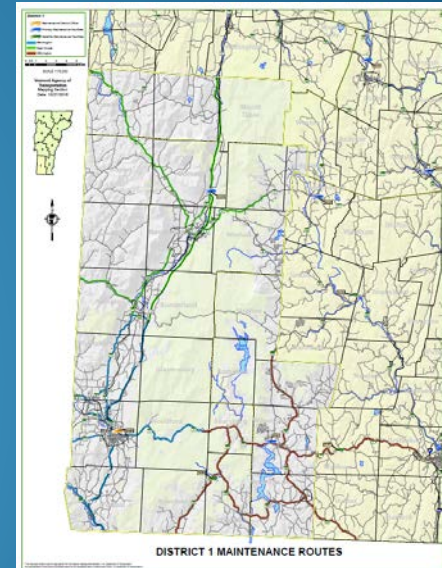
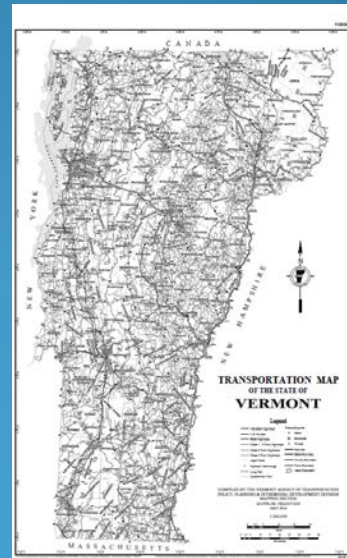
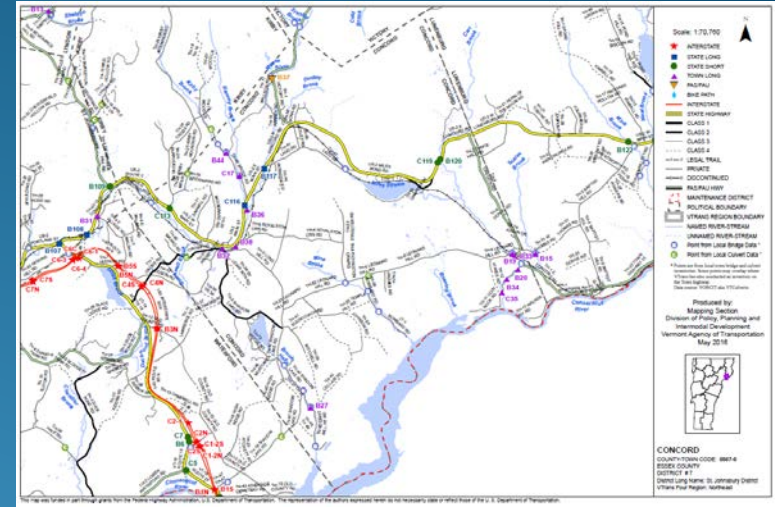
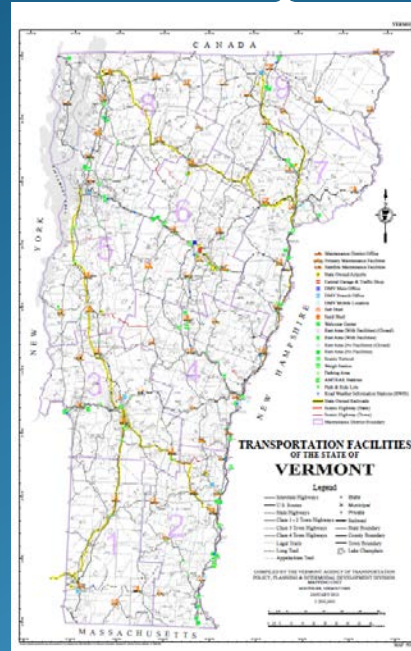
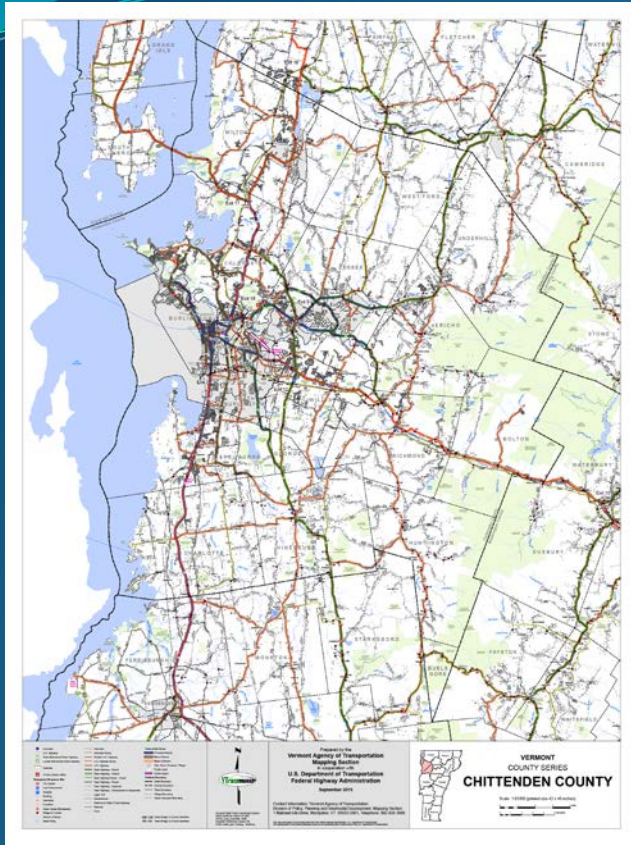


Route Logs – Straight Line Diagrams



The Section produces approximately 1600 Route Logs, which are straight line diagrams of the federal aid highway system, providing detail on geometrics, projects, AADT, crashes and other pertinent information.

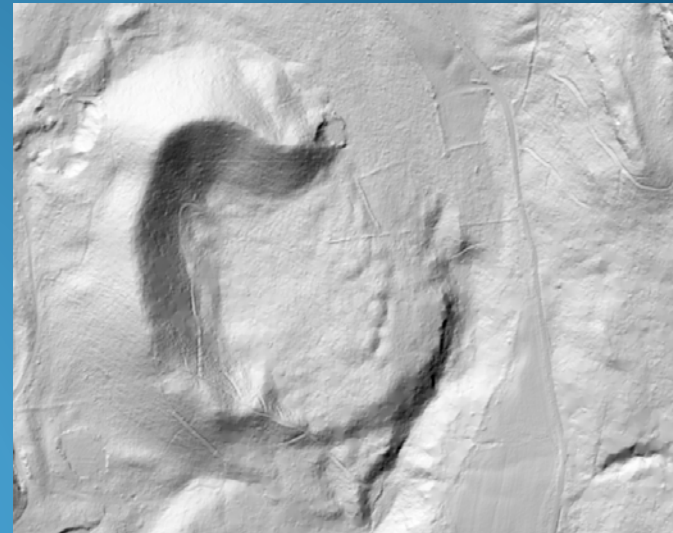
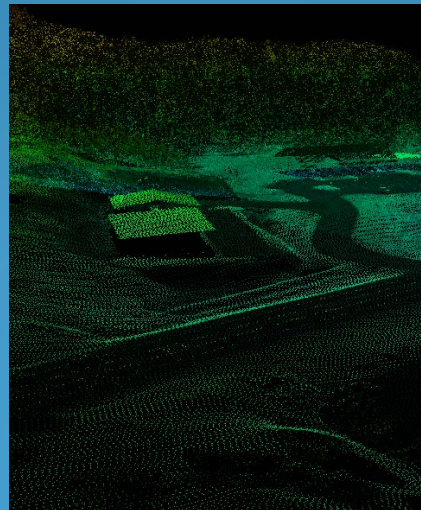
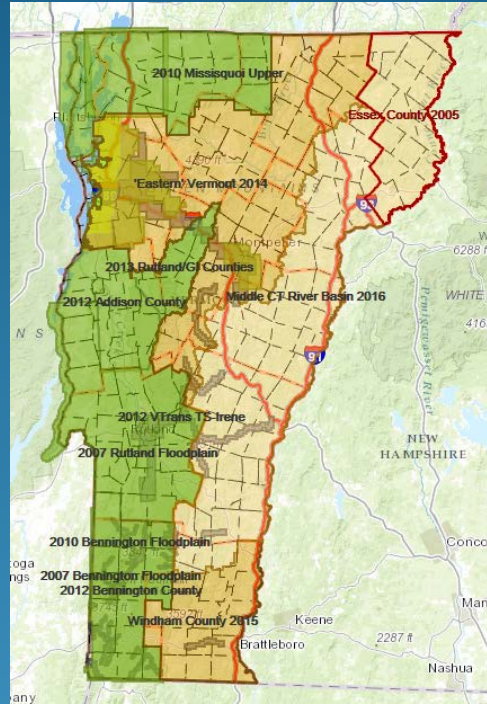
Standard Map Production



Mapping produces a series of standard maps that are available on-line, including the Town & County Map Series, Federal Urban Area Maps, State Highway Map, District Map, and more.

Additional Mapping Related Projects

Mapping has worked on the statewide acquisition of lidar data, which is high resolution terrain data, with the Vermont Center for Geographic Information (VCGI), US Geologic Survey, and a group of stakeholders. Currently all of Vermont has been acquired, and delivered. The Missisquoi Basin, Addison County, and Bennington County have been acquired at the 0.7 meter resolution.



Questions???

Johnathan Croft

Johnathan.Croft@vermont.gov

(802) 828-2600

Sara Moulton

Sara.Moulton@vermont.gov

(802) 828-2109

Michael Trunzo

Michael.Trunzo@vermont.gov

(802) 828-3974

Kerry Alley

Kerry.Alley@vermont.gov

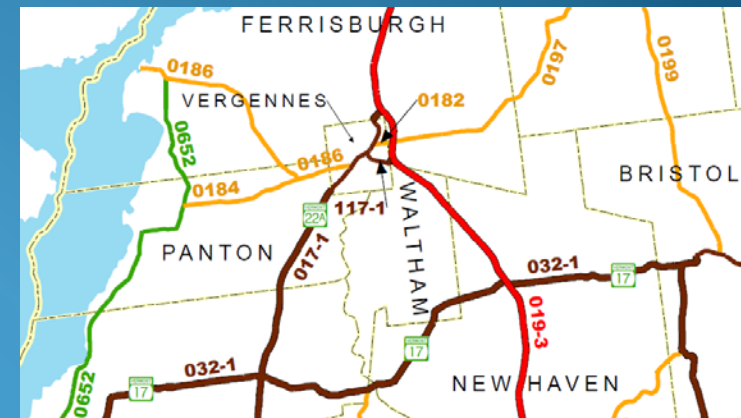
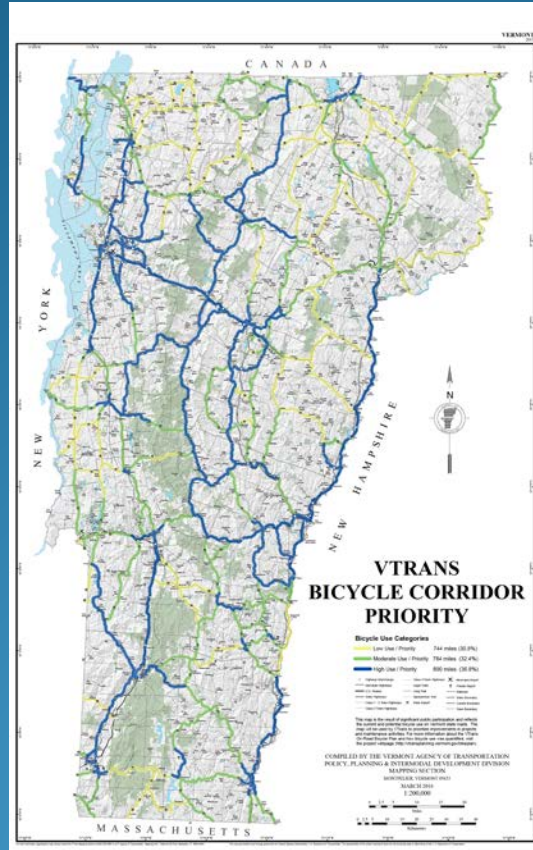
(802) 828-3666

Kevan Grimaldi

Kevan.Grimaldi@vermont.gov

(802) 828-5363

VT Agency of Transportation
Policy, Planning & Intermodal
Development Division -
Mapping Section



More details available on-line at the Mapping Section's web pages at -
<http://vtrans.vermont.gov/planning/maps>